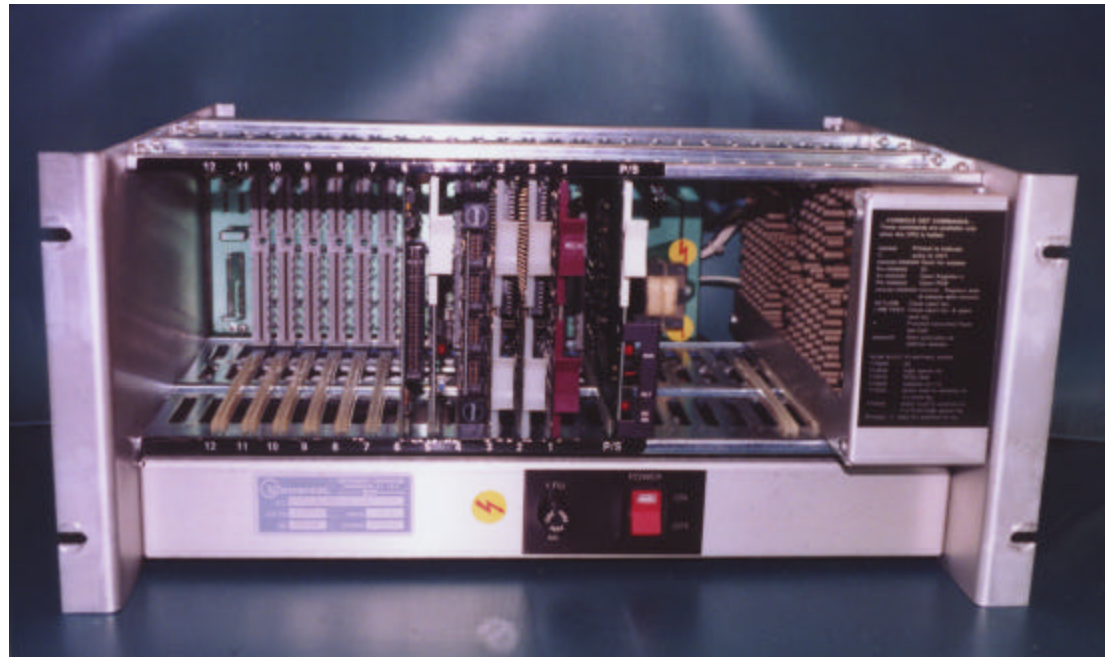


8222/V3 Machine Controller

Configuration Guide





Introduction

- This manual will help setup and configure a controller



Components

- Power Supply
- Power Sequencer
- CPU
- Memory
- Communication
- ROM
- Machine I/O

Configuration 32k System

30042800 8222/V3 Controller 32 K memory

	18013xxx	27514xxx	30032800	30131900	30131900	27555xxx	41273401	30014100
	11/03 Interface	ROM Bootstrap	QSLU Grant Or Computer Products GT304 Or Plessey 703xxxxx 706xxxxx	16 K mem Intersil Or Motorola	16 K mem Intersil Or Motorola	or 41228701 (EMO) M8186	or 27172xxx PWR SEQ	LH TM22
	50 pin connector	EPROMS white handles	4 x 10 pin connectors	White handles	White handles	Purple handle	DC OK LED and run LED Switch P/S	Power Supply
7	6	5	4	3	2	1		

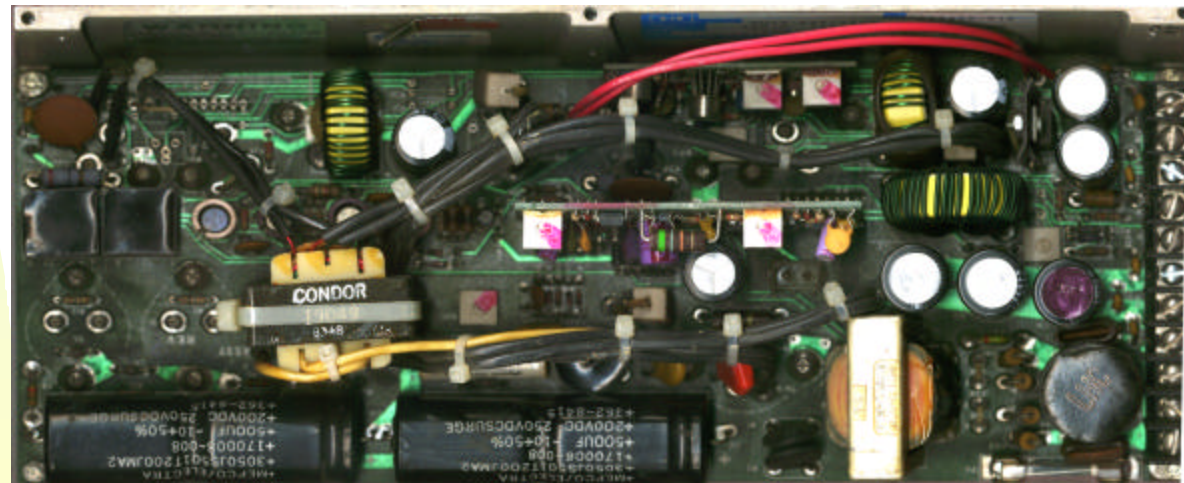
Configuration 128k System (EMO)

41228601 (30042800 upgraded) 8222/V3 Controller 128 K memory

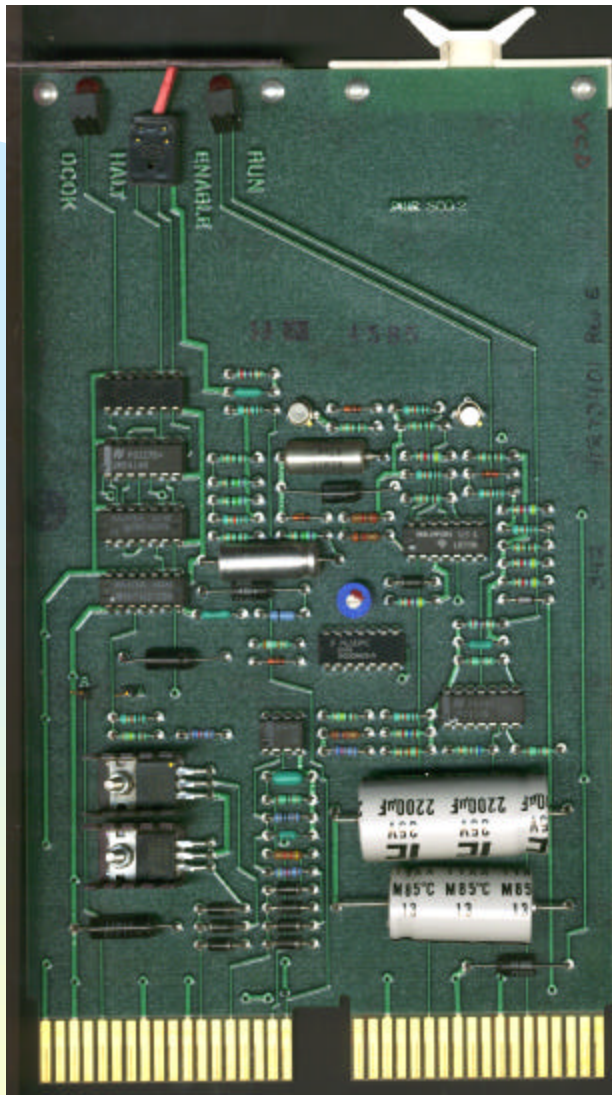
		18013xxx 11/03 Interface	27514xxx ROM Bootstrap	30032800 QSLU Grant Or Computer Products GT304 Or Plessey	40558701 128K mem Micro Mem MM4500 MM4550	41228701 (EMO) M8186	41273401 or 27172xxx PWR SEQ	30014100 LHTM22
		50 pin connector	EPROMS white handles	4 x 10 pin connectors	White handles	Purple handle	DC OK LED and run LED Switch	
7	6	5	4	3	2	1	P/S	Power Supply

Power Supply

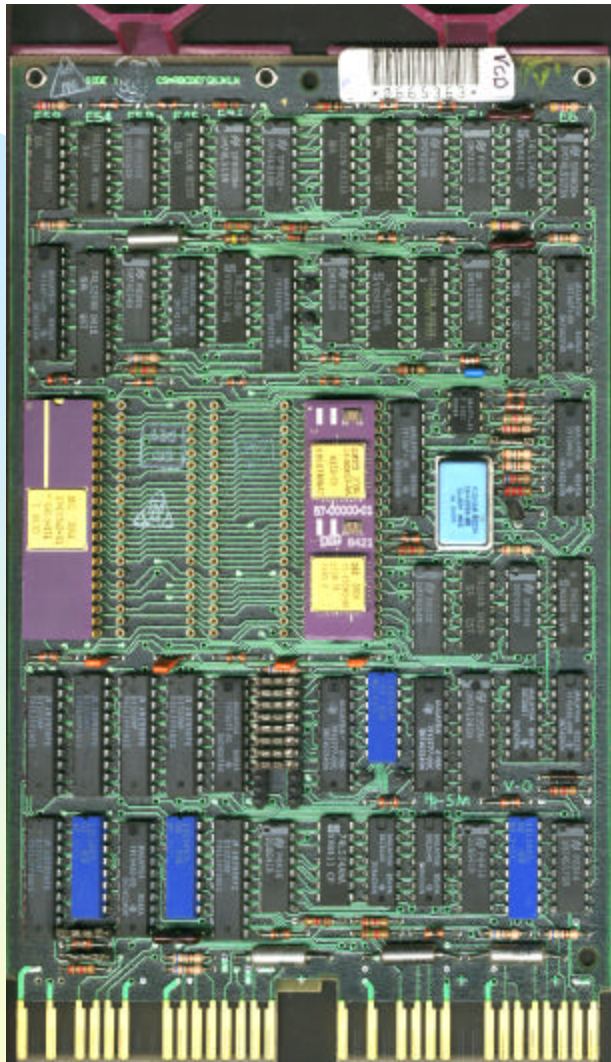
- UIC 30014100
- LH TM22-12Y 5V 20A, 12V 5A
- Connects to back plane via power harness.



Power Sequencer



- UIC 41273401 or 27172xxx
- Monitors 5VDC, 12VDC and AC Power. DC ok LED
- Provides signal to processor on power fail.
- Run/Halt Switch, Run LED
- Has LTC 60 ms generator (disabled)



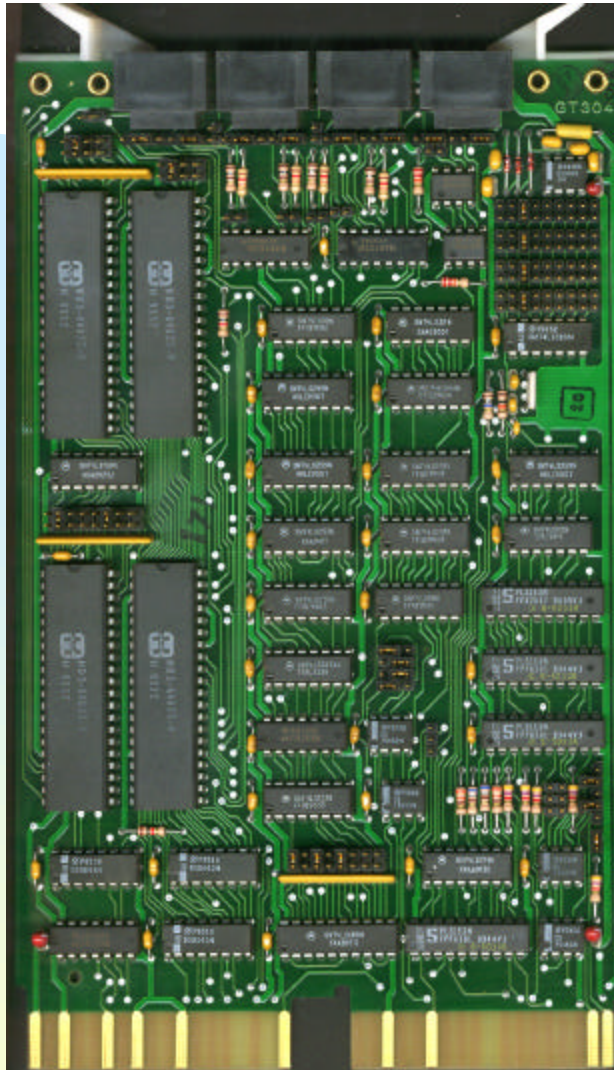
Processor

- UIC 27555000 Non EMO
- UIC 41228701 EMO (Extra 40 Pin IC)
- CPU 16 bit Data
- 18 bit Addressing
- 13MHZ
- PDP11 QBUS
- DEC M8186



Memory

- UIC 30131900 use two (2) 16k each for 32k system
- UIC 40558701 use one (1) 128k for EMO system
- CMOS Static RAM w/Battery Backup on backplane

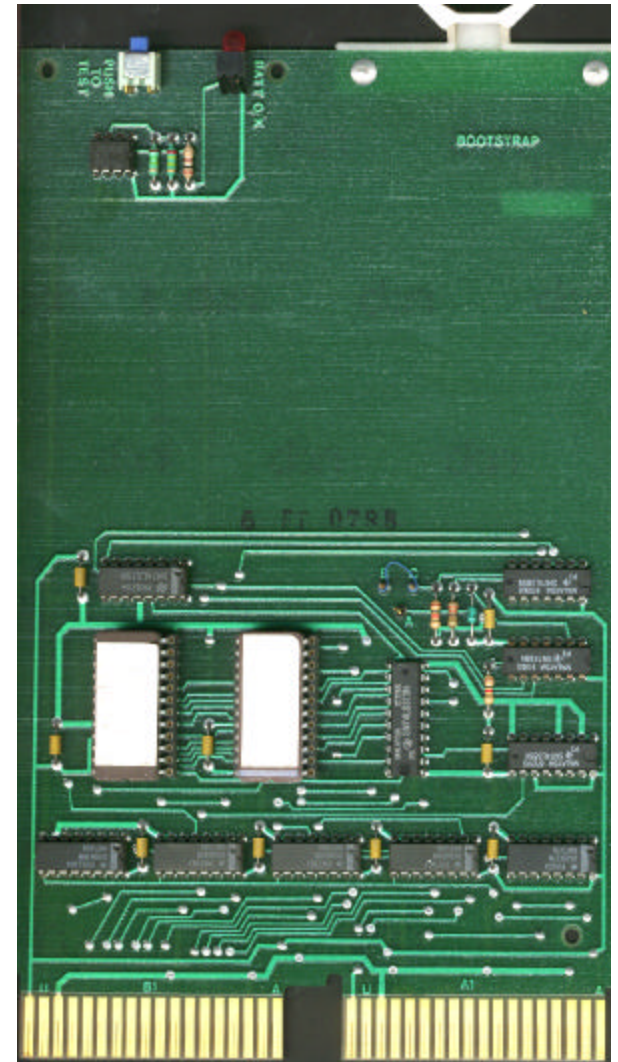


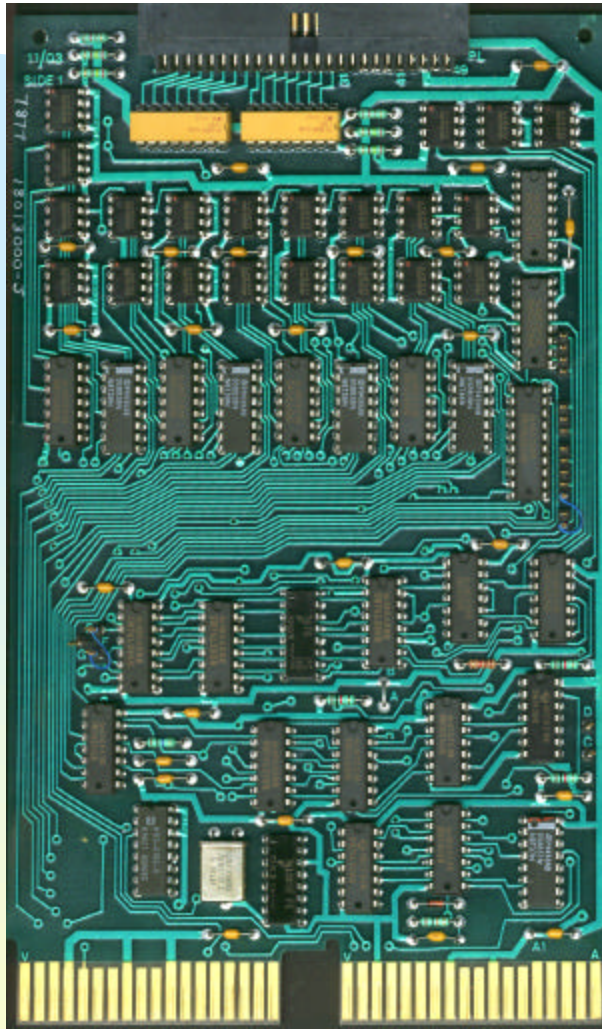
Communication

- UIC 30032800
- Quad Serial Line Unit (QSLU)
- Provides RS232 for Console communication, 3 aux ports
- Plessey
 - ◆ 703330, 705020, 706300
- Computer products GT304

ROM Boot

- UIC 27514000
- Rom Boot Assembly
- Contains UIC 30041600 rev F or H. boot for Console loading and diagnostics
- Battery test button and LED





Machine I/O

- UIC 18013000
- 11/03 interface
- Connects to Machine CIT Cable
- LTC 1 ms generator